

Welcome to



How To Get The Most Out Of SOCAP



Our Venue: The Contemporary Jewish Museum

736 Mission St, San Francisco, CA



- Metreon/City View
- Contemporary Jewish Museum

The Future Is Collaborative: Taking Impact Mainstream



SOCAP 25



Sorenson
Impact Institute

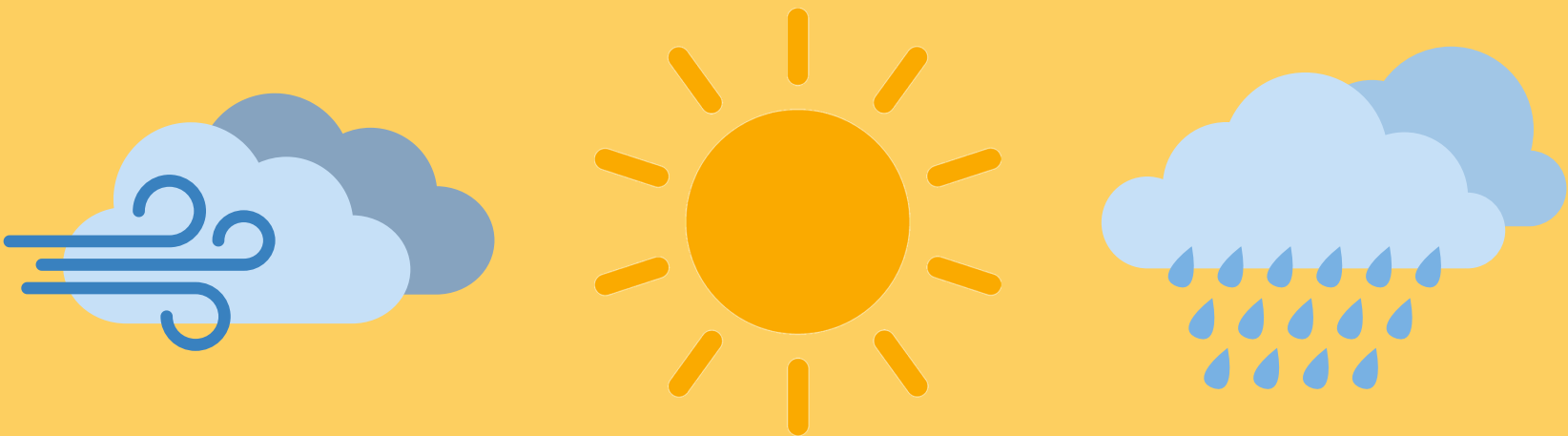


SOCAP25 Content Tracks





Dress Code: Think Comfy!



- Since we are in the California, Silicon Valley area, dress code is pretty casual - business casual to casual
- San Francisco is notorious for it's ever-changing weather so bring **LAYERS** - it tends to get super cold and windy at night
- You're going to be walking **A LOT** so please keep in mind comfy footwear
- Dress the way **YOU** want to represent your organization - and if you're brave, dress to **STAND OUT**

Pre-Registration

- Taking place on Sunday, October 26th from 3:00 - 6:00 pm
- Registration is the main lobby of the Contemporary Jewish Museum
- Regular registration will open at 7:00 am on Monday, Oct 27th.
- **YOU WILL NOT HAVE ACCESS TO SOCAP VENUES WITHOUT YOUR BADGE AND WE WILL NOT REPRINT BADGES**

Additional On-Site Activities

- SOCAP Newcomers Session (Mon at Lunch)
- Funder Showcase (Mon 11:00 am)
- Rethinking Resilience (Mon 2:15 pm)
- Founder Showcase - Miller Center (Mon 2:15 pm)
- Founder Showcase - CWI (Mon 4:00 pm)
- Opening / Closing Plenaries (Mon 9:15am & Weds 5:15pm)
- Regional Networking Sessions
- Surviving 4 More Years: Protecting and Advancing Impact (Wed 3:45 pm)
- Closing Party
- After Parties / Happy Hours

Networking at SOCAP

- Brella (Messaging & Adding to Community Walls)
- Sessions review in the agenda (see who's speaking)
- Meal time connections
- Happy hours / after hours parties
- Buddy System & for Introverts

Brella: What You Need To Know



- If for some reason you have not set up your profile in Brella, please do so TODAY
- Brella has AI capabilities to automatically match you to others who fit your networking profile
- Please be sure to provide YOUR contact information when messaging folks in Brella and get the conversation OUT of Brella if you can to email or whatsapp
- ALWAYS establish a date and location for meetings

Code of Conduct / Staying Safe in SF

- SOCAP has ZERO tolerance for any type of discriminatory behavior or language - please review SOCAP's Code of Conduct before arriving.
- We have a ZERO tolerance policy for unprofessional behavior that makes anyone feel uncomfortable or unsafe - whether verbal, written, or physical
- Please keep in mind cultural differences when approaching and interacting with people - just be kind, courteous, and be professional
- When traveling at night in San Francisco - please travel in groups or take a taxi back to your hostel/hotel
- We have security measures in place with staff should something abrupt take place
- If you EVER feel uncomfortable or unsafe, please alert SOCAP staff - for emergencies, please contact the police/emergency services directly first - 911